

# Livestock Judging Guide



By

Neal Smith

Extension Area Specialist – 4-H

# Module 1



## Introduction to Livestock Judging

# Judging Steps



## Four Steps in Judging Animals

Information

Observation

Comparison

Conclusion



# Judging Steps



## ∞ Information

- ∞ Know the intended use

## ∞ Observation

- ∞ Carefully observe each individual

- ∞ Note how it meets or fails to meet requirements of use

## ∞ Comparison

- ∞ Compare individuals with all others

- ∞ Establish differences & similarities

## ∞ Conclusion

- ∞ Arrive at a logical placing

- ∞ Be able to defend the placing

# Parts of the Animal

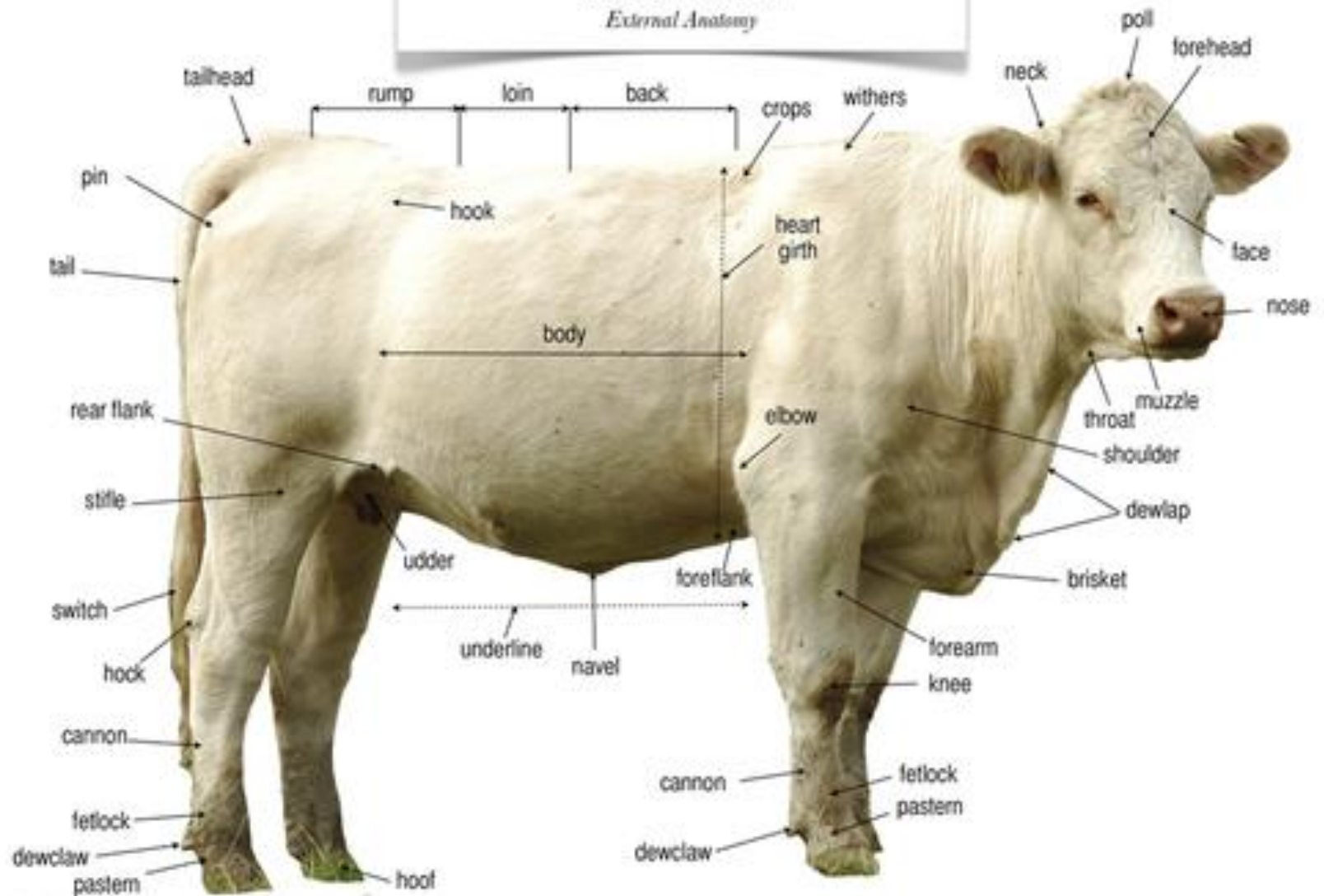


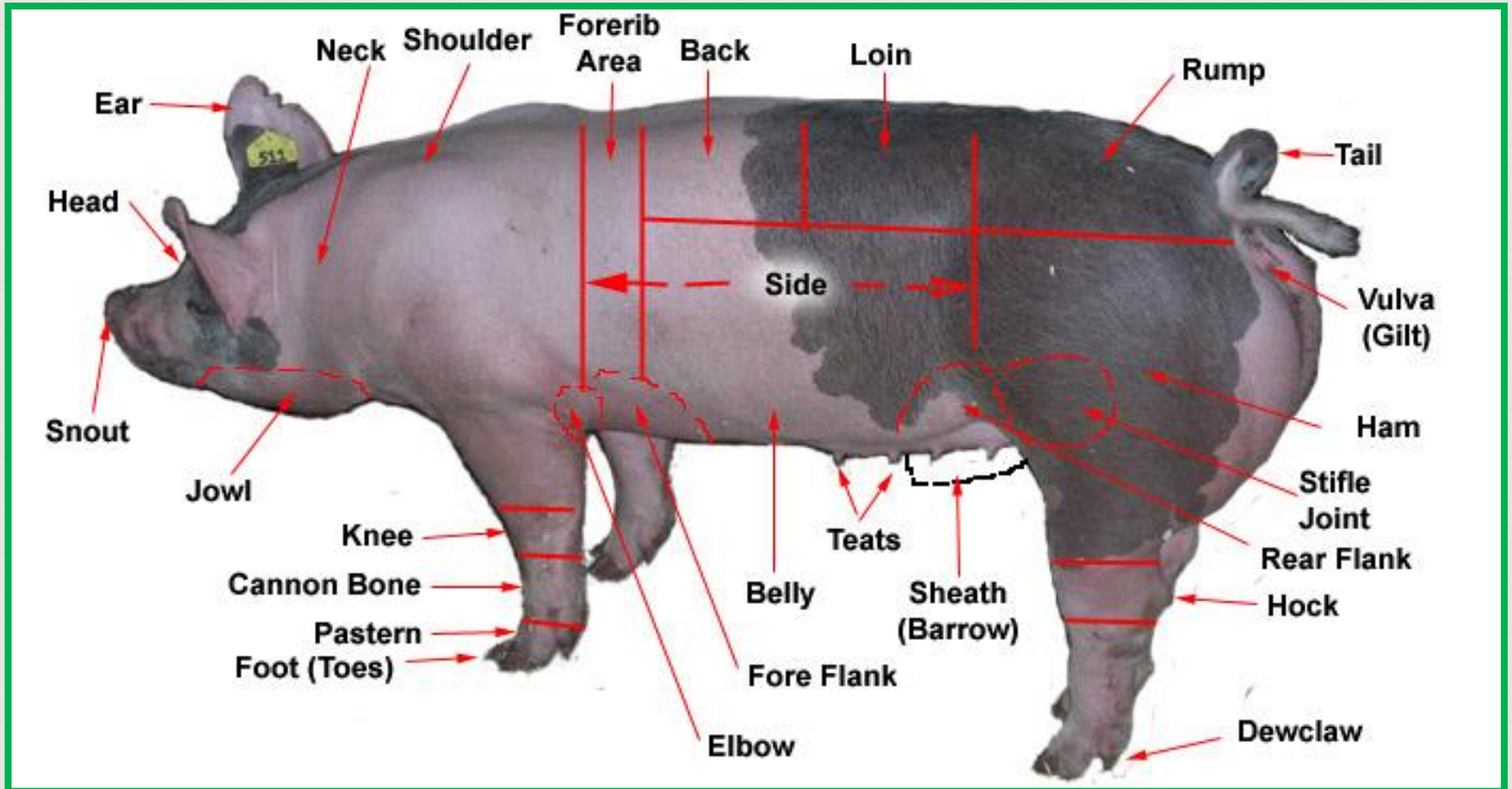
- ❧ The First Step
- ❧ Learn the Parts of Each Species
- ❧ Terms Vary Among Species
  - ❧ Ham versus Quarter
- ❧ Many parts have the same name

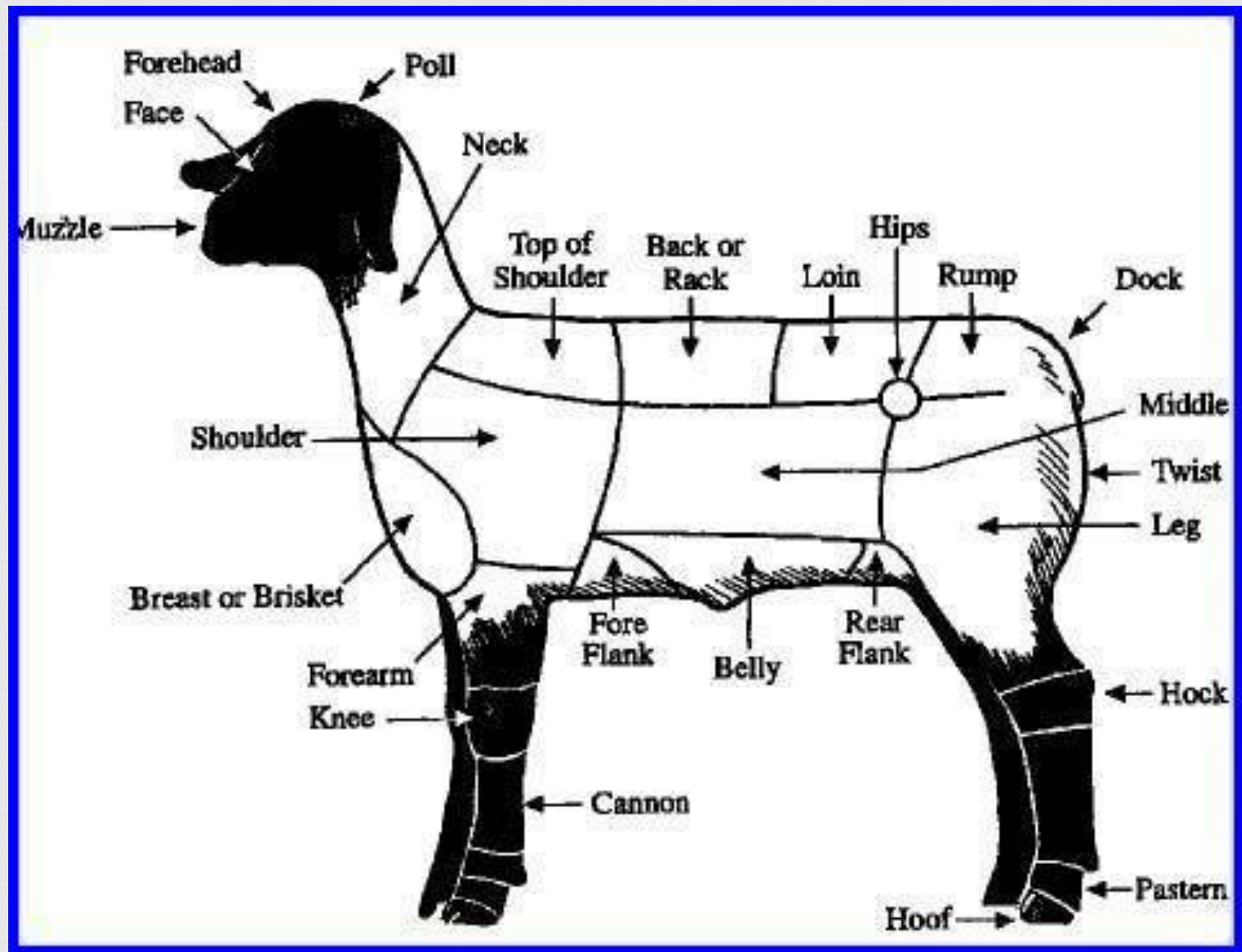


# Beef Cow

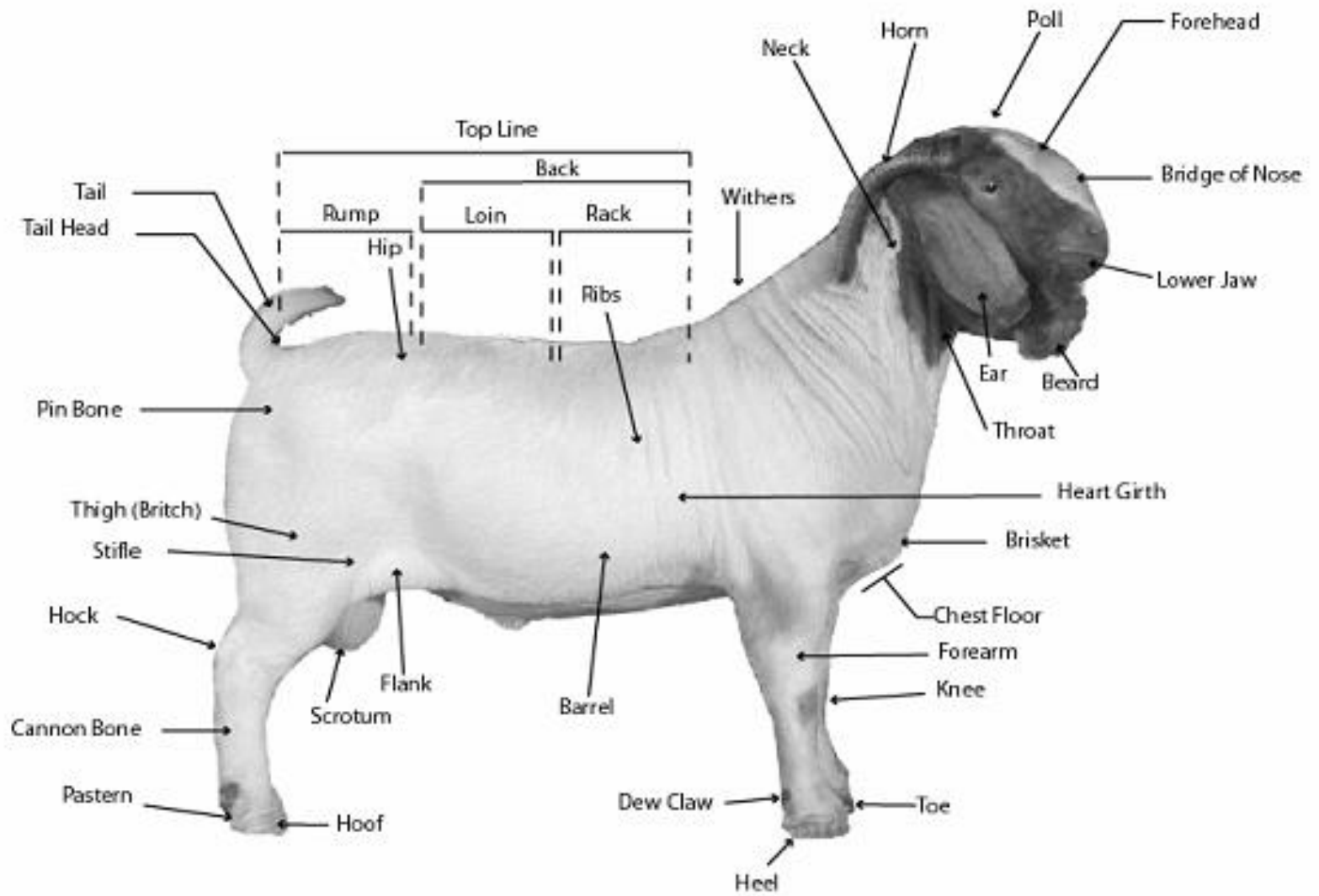
*External Anatomy*











# Selecting Breeding Animals



- ❧ Foundation of Animal Production
- ❧ Select Animals that Possess:
  - ❧ High reproductive efficiency
  - ❧ Efficient conversion of feed
  - ❧ Type of pattern that will reproduce desirable:
    - ❧ Carcass composition
    - ❧ Fleece characteristics
    - ❧ Performance capabilities
  - ❧ Sound feet & legs and structural correctness

# Structural Correctness



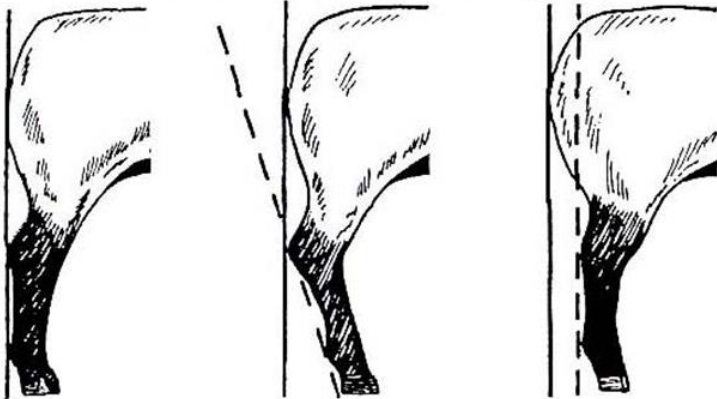
- ❧ Terms are same across species
- ❧ Different terms associated with:
  - ❧ Different views
  - ❧ Different parts of the animal
- ❧ Compare deviation with ideal
  - ❧ Correct versus Incorrect



# Profile View



Side View Rear Legs

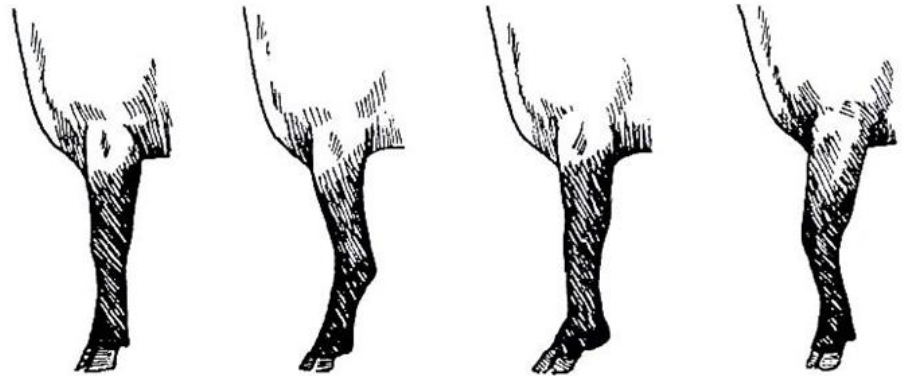


Correct

Sickle-hocked

Post-legged

Side View Front Legs



Correct

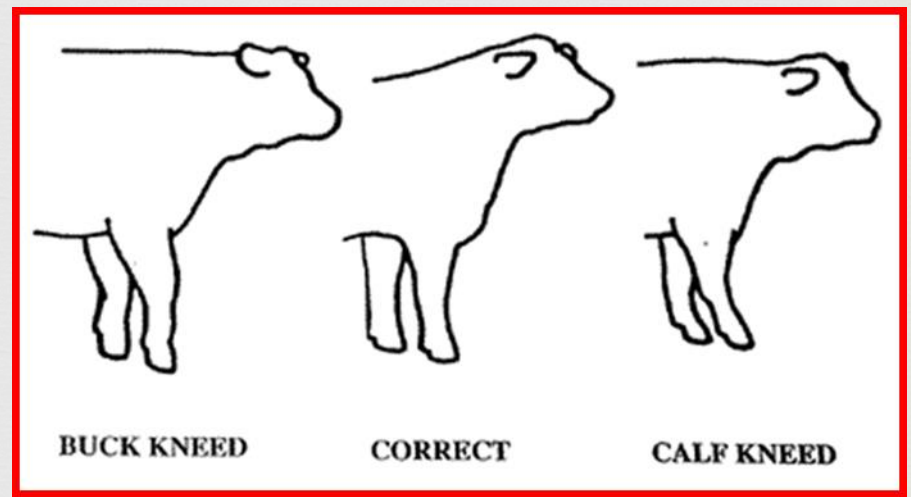
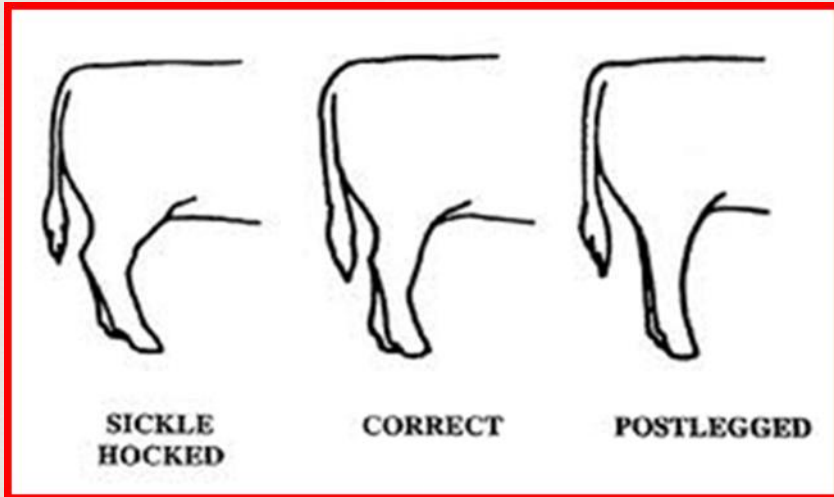
Calf-kneed

Weak pasterns

Buck-kneed

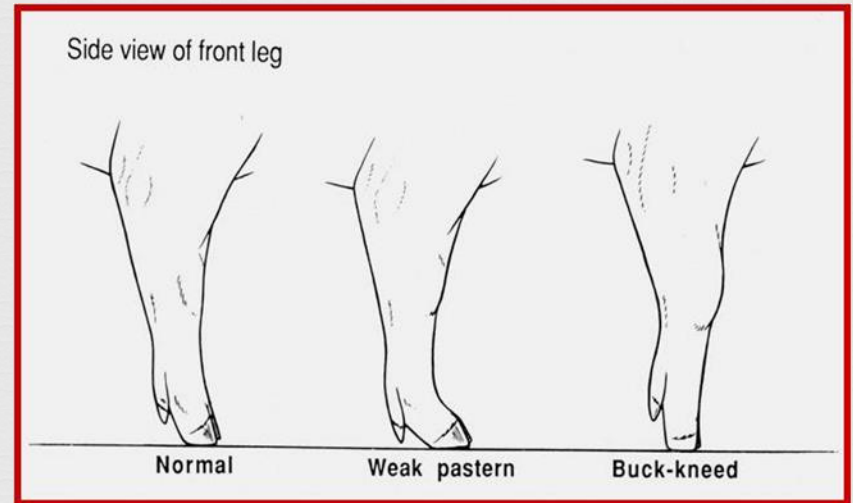
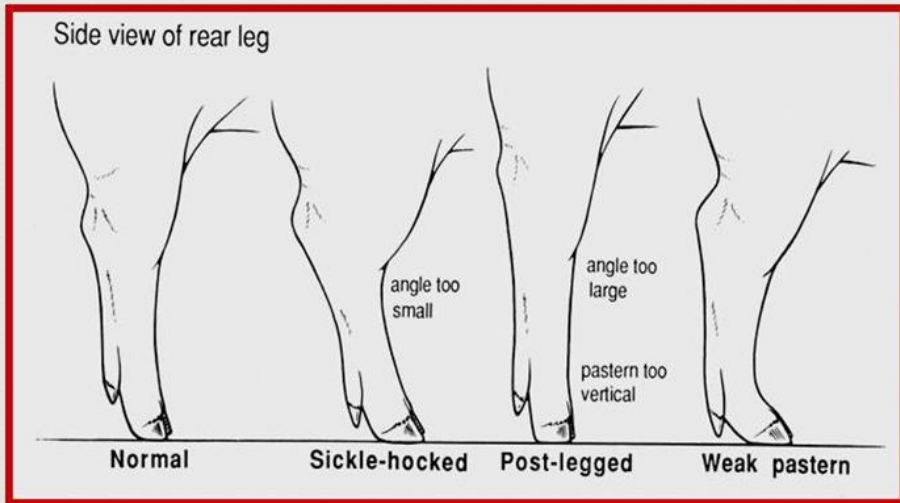
Sheep & Goats

# Profile View



**Beef Cattle**

# Profile View



Swine

# Profile View



Examples of Correct Structure



# Profile View



## Examples of Poor Structure



**Post-legged & Too Steep in Shoulder**



**Broken-topped or Broken-shouldered**



# Test Your Skills



Identify each structural problem in the photos below:



Buck-kneed



Post-legged



Sickle-hocked

# Test Your Skills

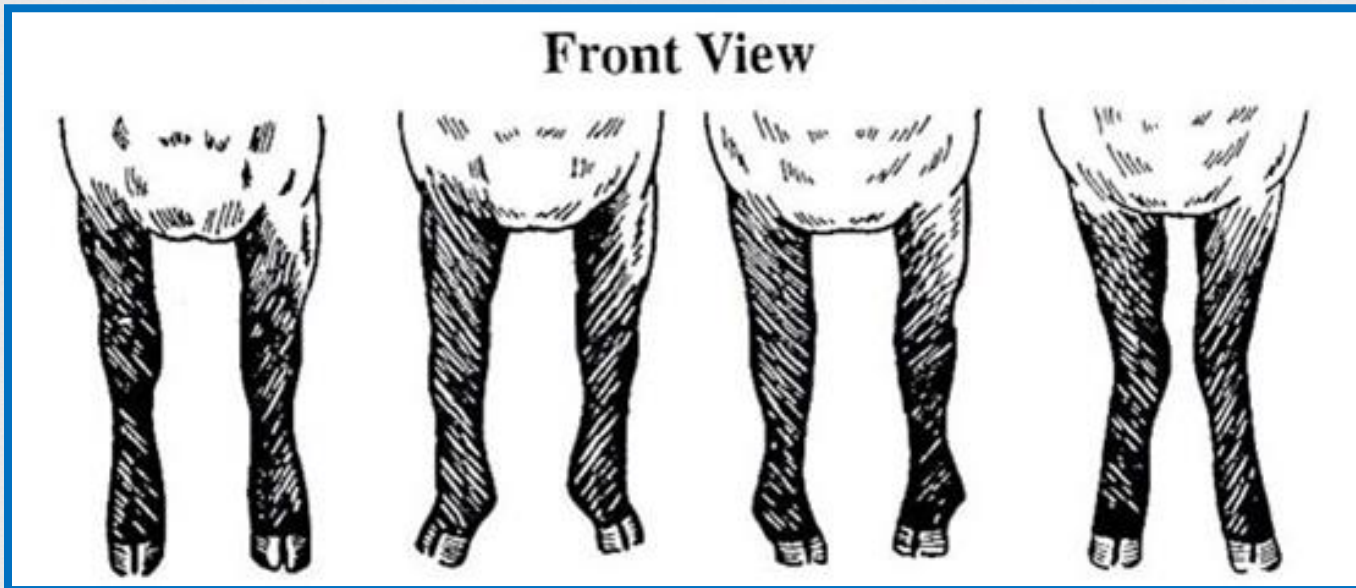


Identify the structural problem in the photos below:



**Weak pasterns or Too much angle to pasterns**

# Front View



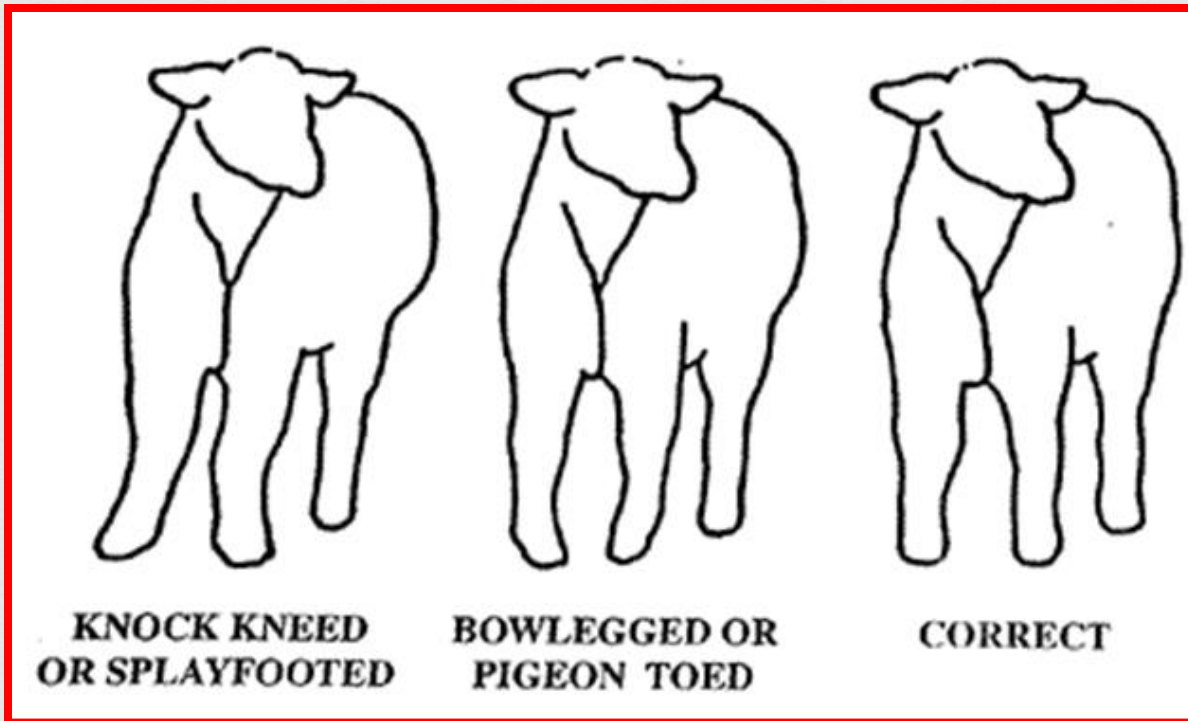
Correct

Splay-footed

Pigeon-toed

Knock-kneed

# Front View



**KNOCK KNEED  
OR SPLAYFOOTED**

**BOWLEGGED OR  
PIGEON TOED**

**CORRECT**

# Test Your Skills

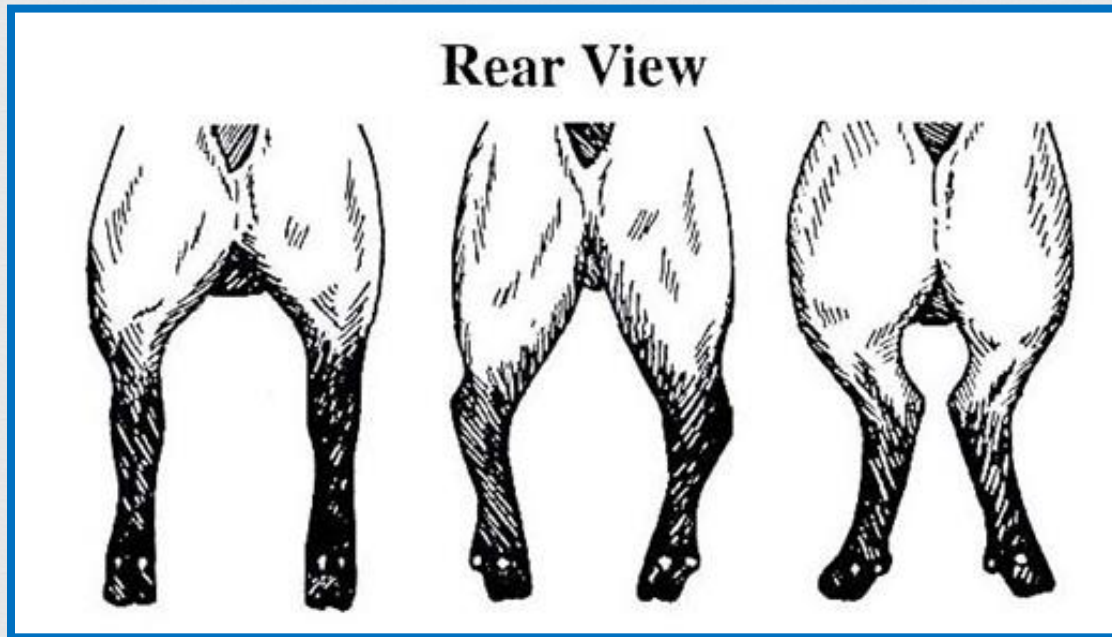


Identify the structural problem in the photo below:



**Splay-footed or Toes turned out**

# Rear View

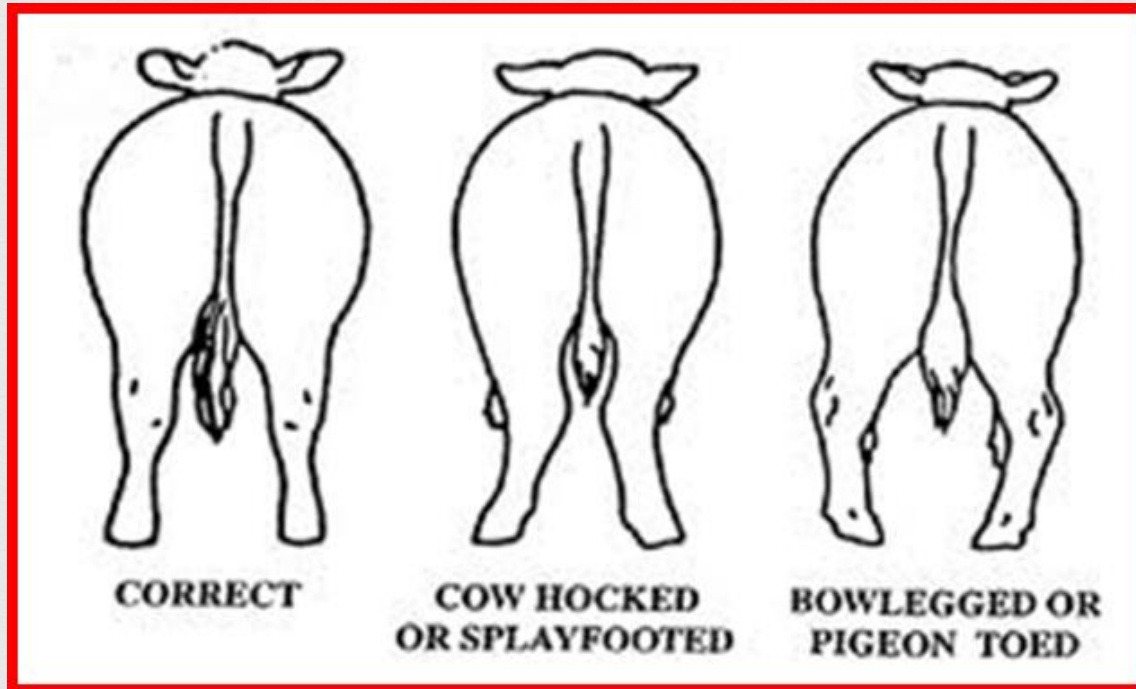


Correct

Bow-legged

Cow-hocked

# Rear View



# Rear View



## Examples of Correct Structure





# Test Your Skills



Identify the structural problem in the photo below:



**Cow-hocked**

# Selecting Market Animals



- ❧ High Percentage of Muscle
- ❧ Low Percentage of Fat
- ❧ Indicators of Muscle:
  - ❧ Thickness through rear quarter
  - ❧ Natural thickness & turn over edge of the top
  - ❧ Forearm muscling
  - ❧ Natural width of leg placement
- ❧ Be sure thickness is natural muscling and NOT excess fat

# Selecting Market Animals



- ❧ Fat is Measured by Three Criteria:
  - ❧ Kind
  - ❧ Amount
  - ❧ Location
- ❧ Appraise fat by observing the finish:
  - ❧ Along the edge of the animal's top
    - ❧ From shoulders back to tail head
  - ❧ Along his side
    - ❧ From head to rear quarter
  - ❧ Along his underline
    - ❧ From his neck to his twist



# Selecting Market Animals



- ❧ Enough fat must be present to:
  - ❧ Indicate quality in the carcass
  - ❧ Ensure acceptable palatability
- ❧ Excess fat is undesirable
- ❧ Slaughter animal must meet the demands of:
  - ❧ Producer
  - ❧ Feeder
  - ❧ Processor
  - ❧ Consumer